

Saxophone

Overtone Exercise #2

Eddie Rich

1

The image displays the first measure of an exercise for saxophone, consisting of four staves of music. Each staff is in 4/4 time and contains a sequence of notes with slurs and diamond-shaped breath marks. Below each staff is a corresponding fingering diagram showing the fingerings for each note. The first staff is in C major (one sharp). The second staff is in D major (two sharps). The third staff is in E major (three sharps). The fourth staff is in F# major (four sharps). The fingering diagrams show the fingerings for each note, with some notes having multiple fingerings indicated by different symbols.

For the rest of the exercises, use the fingering for the round, bottom note (the fundamental) to play the sound of the top, diamond note (the first overtone). If you can't get the overtone to speak, add the octave key to the fingering of the bottom note and continue working to get the overtone to speak without the octave key. Aim for a clean, pure tone.

2

Overtone Exercise #2

3

Exercise 3 consists of four staves of music, each with a treble clef. The first staff is in G major (one sharp) and features a sequence of chords: G4 (diamond), B4 (diamond), D5 (sharp), G4 (diamond), B4 (diamond), D5 (sharp), G4 (diamond), B4 (diamond), D5 (sharp). The second staff is in G minor (no sharps or flats) and features: G4 (diamond), Bb4 (flat), D5 (diamond), G4 (diamond), Bb4 (flat), D5 (diamond). The third staff is in G major and features: G4 (diamond), B4 (diamond), D5 (diamond), G4 (diamond), B4 (diamond), D5 (diamond). The fourth staff is in G minor and features: G4 (diamond), Bb4 (flat), D5 (diamond), G4 (diamond), Bb4 (flat), D5 (diamond). Each staff has two measures of chords, each measure containing three notes, with a slur over the notes and a bar line at the end of each measure.

4

Exercise 4 consists of three staves of music, each with a treble clef. The first staff is in G major and features a sequence of chords: G4 (diamond), B4 (sharp), D5 (sharp), G4 (diamond), B4 (sharp), D5 (sharp), G4 (diamond), B4 (sharp), D5 (sharp). The second staff is in G minor and features: G4 (diamond), Bb4 (flat), D5 (diamond), G4 (diamond), Bb4 (flat), D5 (diamond), G4 (diamond), Bb4 (flat), D5 (diamond). The third staff is in G major and features: G4 (diamond), B4 (diamond), D5 (diamond), G4 (diamond), B4 (diamond), D5 (diamond), G4 (diamond), B4 (diamond), D5 (diamond). Each staff has two measures of chords, each measure containing three notes, with a slur over the notes and a bar line at the end of each measure.

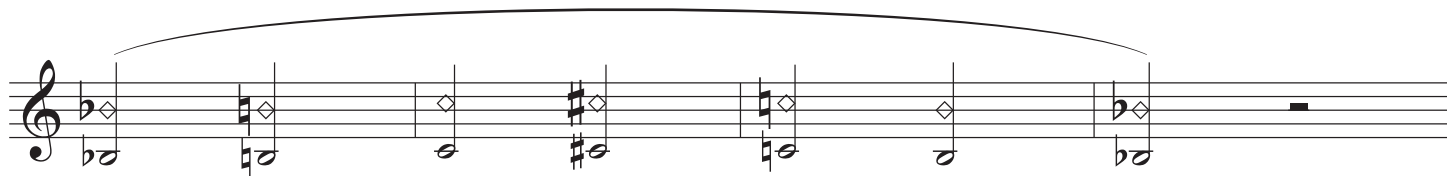
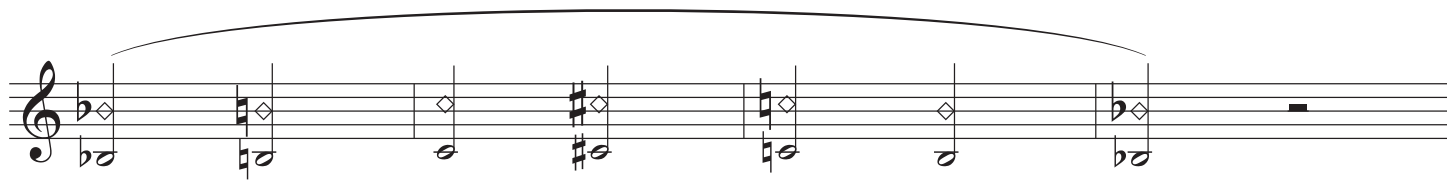
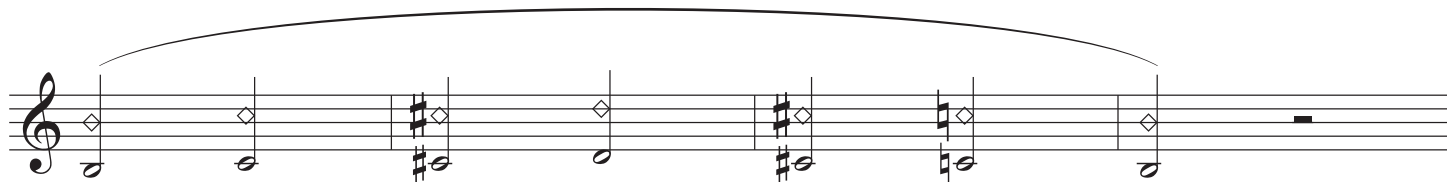
5

Exercise 5 consists of three systems of two staves each. Each system contains two measures of music. The notes are diamond-shaped and are connected by a slur. The first system is in G major, the second in F major, and the third in E major. Each measure contains a pair of notes (one on the upper staff, one on the lower staff) and a rest. The notes in the first measure of each system are: G4 (treble), G3 (bass) in G major; F4 (treble), F3 (bass) in F major; and E4 (treble), E3 (bass) in E major. The notes in the second measure are: A4 (treble), A3 (bass) in G major; G4 (treble), G3 (bass) in F major; and F4 (treble), F3 (bass) in E major.

6

Exercise 6 consists of four systems of two staves each. Each system contains two measures of music. The notes are diamond-shaped and are connected by a slur. The first system is in G major, the second in F major, the third in E major, and the fourth in D major. Each measure contains a pair of notes (one on the upper staff, one on the lower staff) and a rest. The notes in the first measure of each system are: G4 (treble), G3 (bass) in G major; F4 (treble), F3 (bass) in F major; E4 (treble), E3 (bass) in E major; and D4 (treble), D3 (bass) in D major. The notes in the second measure are: A4 (treble), A3 (bass) in G major; G4 (treble), G3 (bass) in F major; F4 (treble), F3 (bass) in E major; and E4 (treble), E3 (bass) in D major.

7



8

