

Saxophone

Scale Exercise #4

E \flat Major Full Range

Eddie Rich

1 ♩ = 60-160 for all exercises

The first two staves of exercise 1 show a melodic line in E \flat major, 4/4 time. The first staff contains the first half of the scale: C \flat 4, D \flat 4, E \flat 4, F \flat 4, G \flat 4, A \flat 4, B \flat 4, C \flat 5, D \flat 5, E \flat 5, F \flat 5, G \flat 5, A \flat 5, B \flat 5, C \flat 6. The second staff contains the second half of the scale: B \flat 5, A \flat 5, G \flat 5, F \flat 5, E \flat 5, D \flat 5, C \flat 5, B \flat 4, A \flat 4, G \flat 4, F \flat 4, E \flat 4, D \flat 4, C \flat 4. Both staves are marked with a long slur.

The remaining six staves of exercise 1 consist of rhythmic patterns in E \flat major, 4/4 time. Each staff begins with a quarter rest followed by a quarter note. The patterns are as follows:
Staff 3: Quarter notes with eighth-note pairs: C \flat 4, D \flat 4; E \flat 4, F \flat 4; G \flat 4, A \flat 4; B \flat 4, C \flat 5; D \flat 5, E \flat 5; F \flat 5, G \flat 5; A \flat 5, B \flat 5; C \flat 6, B \flat 5.
Staff 4: Quarter notes with eighth-note pairs: B \flat 5, A \flat 5; G \flat 5, F \flat 5; E \flat 5, D \flat 5; C \flat 5, B \flat 4; A \flat 4, G \flat 4; F \flat 4, E \flat 4; D \flat 4, C \flat 4; B \flat 4, A \flat 4; G \flat 4, F \flat 4; E \flat 4, D \flat 4; C \flat 4, B \flat 4; A \flat 4, G \flat 4; F \flat 4, E \flat 4; D \flat 4, C \flat 4.
Staff 5: Quarter notes with eighth-note pairs: B \flat 4, A \flat 4; G \flat 4, F \flat 4; E \flat 4, D \flat 4; C \flat 4, B \flat 4; A \flat 4, G \flat 4; F \flat 4, E \flat 4; D \flat 4, C \flat 4; B \flat 4, A \flat 4; G \flat 4, F \flat 4; E \flat 4, D \flat 4; C \flat 4, B \flat 4; A \flat 4, G \flat 4; F \flat 4, E \flat 4; D \flat 4, C \flat 4.
Staff 6: Quarter notes with eighth-note pairs: B \flat 4, A \flat 4; G \flat 4, F \flat 4; E \flat 4, D \flat 4; C \flat 4, B \flat 4; A \flat 4, G \flat 4; F \flat 4, E \flat 4; D \flat 4, C \flat 4; B \flat 4, A \flat 4; G \flat 4, F \flat 4; E \flat 4, D \flat 4; C \flat 4, B \flat 4; A \flat 4, G \flat 4; F \flat 4, E \flat 4; D \flat 4, C \flat 4.
Staff 7: Quarter notes with eighth-note pairs: B \flat 4, A \flat 4; G \flat 4, F \flat 4; E \flat 4, D \flat 4; C \flat 4, B \flat 4; A \flat 4, G \flat 4; F \flat 4, E \flat 4; D \flat 4, C \flat 4; B \flat 4, A \flat 4; G \flat 4, F \flat 4; E \flat 4, D \flat 4; C \flat 4, B \flat 4; A \flat 4, G \flat 4; F \flat 4, E \flat 4; D \flat 4, C \flat 4.
Staff 8: Quarter notes with eighth-note pairs: B \flat 4, A \flat 4; G \flat 4, F \flat 4; E \flat 4, D \flat 4; C \flat 4, B \flat 4; A \flat 4, G \flat 4; F \flat 4, E \flat 4; D \flat 4, C \flat 4; B \flat 4, A \flat 4; G \flat 4, F \flat 4; E \flat 4, D \flat 4; C \flat 4, B \flat 4; A \flat 4, G \flat 4; F \flat 4, E \flat 4; D \flat 4, C \flat 4.

Scale Exercise #4
E \flat Major Full Range

Musical notation for Exercise 2, E \flat Major Full Range, measures 1-12. The exercise is in 2/4 time and consists of three staves. The first staff contains measures 1-4, the second staff contains measures 5-8, and the third staff contains measures 9-12. The notation includes eighth and sixteenth notes, often beamed together, with various articulations such as slurs and accents.

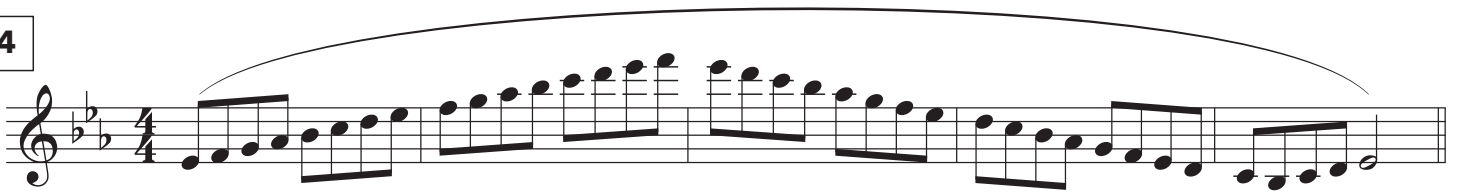
3

Musical notation for Exercise 3, E \flat Major Full Range, measures 1-12. The exercise is in 2/4 time and consists of four staves. The first staff contains measures 1-6, and the subsequent three staves contain measures 7-12. The notation features eighth and sixteenth notes, frequently beamed together, with slurs and accents used for phrasing.

Scale Exercise #4
E \flat Major Full Range



4



5

