

Alto Saxophone

Apr 2021 Warm Up of the Month

Intermediate/Advanced

Eddie Rich

1

Exercise 1, first two staves. The first staff is in 4/4 time with a key signature of three flats (B-flat, E-flat, A-flat). It features a sequence of eighth notes with slurs and accents, starting on G4 and moving up stepwise to D5. The second staff continues the sequence, ending on D5.

2

Exercise 2, first two staves. The first staff features a sequence of eighth notes with slurs and accents, starting on G4 and moving up stepwise to D5. The second staff continues the sequence, ending on D5.

3

Exercise 3, first two staves. The first staff features a sequence of eighth notes with slurs and accents, starting on G4 and moving up stepwise to D5. The second staff continues the sequence, ending on D5.

4

Exercise 4 consists of two staves of music in G minor (one flat). The first staff contains four measures of music, each with a half-note melody and a dotted half-note bass line. The second staff contains four measures of music, each with a half-note melody and a dotted half-note bass line. The melody in the first staff is G4, A4, Bb4, C5, and the melody in the second staff is G4, A4, Bb4, C5. The bass line in both staves is G3, Bb3, C4, D4, E4, F4, G4.

5

Exercise 5 consists of two staves of music in G minor (one flat). The first staff contains four measures of music, each with a half-note melody and a dotted half-note bass line. The second staff contains four measures of music, each with a half-note melody and a dotted half-note bass line. The melody in the first staff is G4, A4, Bb4, C5, and the melody in the second staff is G4, A4, Bb4, C5. The bass line in both staves is G3, Bb3, C4, D4, E4, F4, G4.

6

Exercise 6 consists of three staves of music in G minor (one flat). The first staff contains four measures of music, each with a half-note melody and a dotted half-note bass line. The second staff contains four measures of music, each with a half-note melody and a dotted half-note bass line. The third staff contains four measures of music, each with a half-note melody and a dotted half-note bass line. The melody in the first staff is G4, A4, Bb4, C5, and the melody in the second staff is G4, A4, Bb4, C5. The bass line in all three staves is G3, Bb3, C4, D4, E4, F4, G4.

7 Overtones - Use low Eb fingering for all notes in this exercise.

Exercise 7 consists of three staves of music in E-flat major. The first staff contains a sequence of notes: E-flat, G-flat, B-flat, D-flat, E-flat, G-flat, B-flat, D-flat, E-flat, G-flat, B-flat, D-flat, E-flat, G-flat, B-flat, D-flat, E-flat, G-flat, B-flat, D-flat. The notes are grouped into pairs with slurs. The second staff contains a sequence of notes: E-flat, G-flat, B-flat, D-flat, E-flat, G-flat, B-flat, D-flat, E-flat, G-flat, B-flat, D-flat, E-flat, G-flat, B-flat, D-flat, E-flat, G-flat, B-flat, D-flat. The notes are grouped into pairs with slurs. The third staff contains a sequence of notes: E-flat, G-flat, B-flat, D-flat, E-flat, G-flat, B-flat, D-flat, E-flat, G-flat, B-flat, D-flat, E-flat, G-flat, B-flat, D-flat, E-flat, G-flat, B-flat, D-flat. The notes are grouped into pairs with slurs.

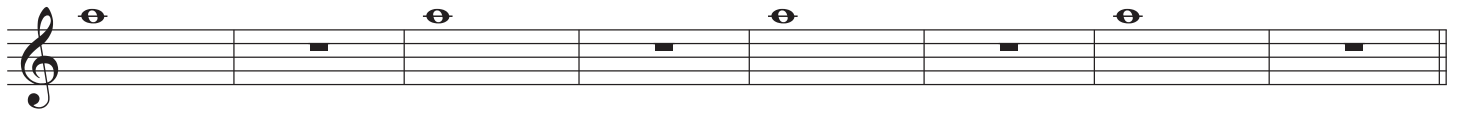
8 Overtone Scale

Exercise 8 consists of two staves of music in E-flat major. The first staff contains a sequence of notes: E-flat, G-flat, B-flat, D-flat, E-flat, G-flat, B-flat, D-flat, E-flat, G-flat, B-flat, D-flat, E-flat, G-flat, B-flat, D-flat, E-flat, G-flat, B-flat, D-flat. The notes are grouped into pairs with slurs. The second staff contains a sequence of notes: E-flat, G-flat, B-flat, D-flat, E-flat, G-flat, B-flat, D-flat, E-flat, G-flat, B-flat, D-flat, E-flat, G-flat, B-flat, D-flat, E-flat, G-flat, B-flat, D-flat. The notes are grouped into pairs with slurs. Below each staff are fingering diagrams for the notes. The diagrams show the fingerings for each note: E-flat (1), G-flat (2), B-flat (3), D-flat (4), E-flat (1), G-flat (2), B-flat (3), D-flat (4), E-flat (1), G-flat (2), B-flat (3), D-flat (4), E-flat (1), G-flat (2), B-flat (3), D-flat (4), E-flat (1), G-flat (2), B-flat (3), D-flat (4).

9

Exercise 9 consists of one staff of music in E-flat major. The staff contains a sequence of notes: E-flat, G-flat, B-flat, D-flat, E-flat, G-flat, B-flat, D-flat, E-flat, G-flat, B-flat, D-flat, E-flat, G-flat, B-flat, D-flat, E-flat, G-flat, B-flat, D-flat. The notes are grouped into pairs with slurs. Below the staff are fingering diagrams for the notes. The diagrams show the fingerings for each note: E-flat (1), G-flat (2), B-flat (3), D-flat (4), E-flat (1), G-flat (2), B-flat (3), D-flat (4), E-flat (1), G-flat (2), B-flat (3), D-flat (4), E-flat (1), G-flat (2), B-flat (3), D-flat (4), E-flat (1), G-flat (2), B-flat (3), D-flat (4).

10 Concert Pitch - Mouthpiece Only



11 Concert Pitch - Mouthpiece Only

