

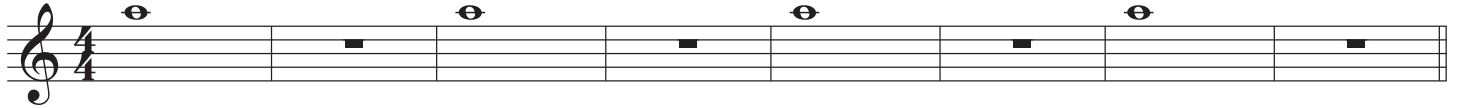
Alto Saxophone

Mar 2021 Warm Up of the Month

Intermediate/Advanced

Eddie Rich

1 Concert Pitch - Mouthpiece Only



5

6

7 Intermediate

Advanced

8

9 Overtone Scale - Use low D fingering for all notes in this exercise unless otherwise noted.

Add C# key for this and all higher overtones.

10 Overtone Scale

11

The image shows a musical exercise on a single staff in treble clef with a key signature of two sharps (F# and C#). The exercise consists of eight measures, each containing a single note. The notes are: G4, A4, B4, C5, D5, E5, F#5, and G5. Below the staff is a guitar fretboard diagram with six strings and a vertical line representing the neck. The diagram shows the following fret positions for each measure: Measure 1: 2nd fret on all strings. Measure 2: 2nd fret on all strings, with the 6th string open. Measure 3: 3rd fret on all strings, with the 6th string open. Measure 4: 3rd fret on all strings. Measure 5: 4th fret on all strings. Measure 6: 4th fret on all strings, with the 6th string open. Measure 7: 5th fret on all strings, with the 6th string open. Measure 8: 5th fret on all strings, with the 6th string open.