

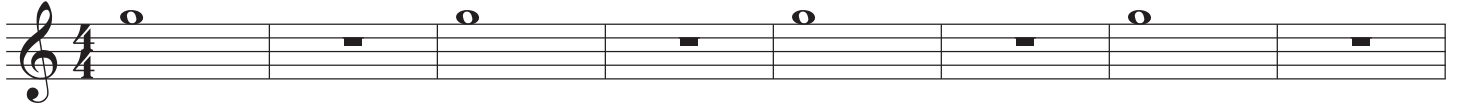
Tenor Saxophone

Warm Up of the Month - Jan 2021

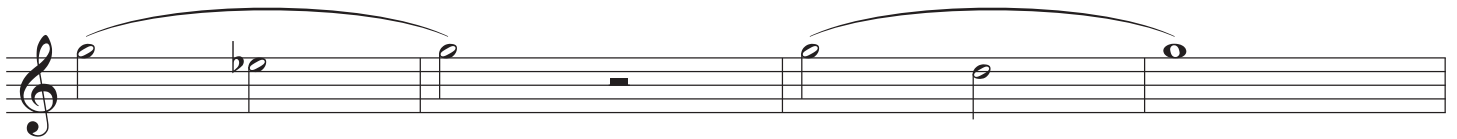
Intermediate/Advanced

Eddie Rich

1 Mouthpiece Only. Concert Pitch



2 Mouthpiece only. Concert Pitch. "Remington" Exercise



3 Descending C Major Scale (Middle C - Low C)



4 Descending C Major "Remington" Exercise (Middle C - Low C)



Warm Up of the Month - Jan 2021
Intermediate/Advanced

5 Ascending C Major "Remington" Exercise (Low C - Middle C)

Musical notation for Exercise 5, consisting of three staves. The first staff contains three measures of eighth notes: C4, D4, E4; F4, G4, A4; B4, C5. The second staff contains two measures of quarter notes: C4, E4; G4, B4. The third staff contains two measures of half notes: C4, E4; G4, B4. All notes are beamed together with a slur.

6 Ascending C Major Scale (Middle C - High C)

Musical notation for Exercise 6, consisting of two staves. The first staff contains seven measures of quarter notes: C4, D4, E4, F4, G4, A4, B4. The second staff contains seven measures of quarter notes: C5, B4, A4, G4, F4, E4, D4. All notes are beamed together with a slur.

7 Ascending C Major "Remington" Exercise (Middle C - High C)

Musical notation for Exercise 7, consisting of three staves. The first staff contains three measures of quarter notes: C4, D4, E4; F4, G4, A4; B4, C5. The second staff contains two measures of quarter notes: C4, E4; G4, B4. The third staff contains two measures of half notes: C4, E4; G4, B4. All notes are beamed together with a slur.

8 Descending C Major "Remington" Exercise (High C - Middle C)

9 Ascending C Major Scale (High C - High F)

10 Ascending C Major "Remington" Exercise (High C - High F)

11 C Major Triad - Full Range

12 Long Overtones - Finger Low C throughout, no octave key. If you can't yet play some of the higher overtones, play the highest overtone you can play for the rest of the exercise.

13 C Major Overtone Scale

Exercise 13 consists of two staves of music. The first staff shows a sequence of notes: C4 (quarter), G4 (quarter), C5 (quarter), G5 (quarter), C6 (quarter), G6 (quarter), C7 (quarter), and G7 (quarter). The second staff shows a sequence of notes: C4 (quarter), E4 (quarter), G4 (quarter), Bb4 (quarter), C5 (quarter), E5 (quarter), G5 (quarter), and Bb5 (quarter). Below each staff are fretboard diagrams for the guitar. The first staff's diagrams show the positions for C4, G4, C5, and G5. The second staff's diagrams show the positions for C4, E4, G4, Bb4, C5, E5, G5, and Bb5. The diagrams use black dots for fretted notes and white circles for open strings. Fingering is indicated by numbers 1-4.

14 C Major Overtone Scale

Exercise 14 consists of a single staff of music showing a sequence of notes: C4 (quarter), E4 (quarter), G4 (quarter), Bb4 (quarter), C5 (quarter), E5 (quarter), G5 (quarter), and Bb5 (quarter). Below the staff are fretboard diagrams for the guitar. The diagrams show the positions for C4, E4, G4, Bb4, C5, E5, G5, and Bb5. The diagrams use black dots for fretted notes and white circles for open strings. Fingering is indicated by numbers 1-4.