

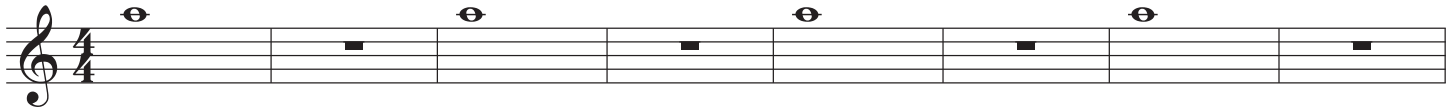
Alto Saxophone

Warm Up of the Month - Jan 2021

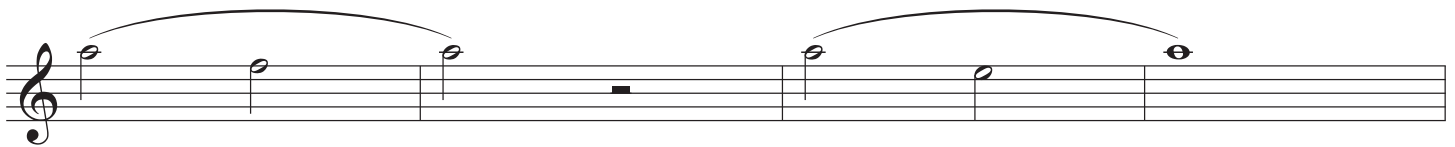
Intermediate/Advanced

Eddie Rich

1 Mouthpiece Only. Concert Pitch



2 Mouthpiece only. Concert Pitch. "Remington" Exercise



3 Descending C Major Scale (Middle C - Low C)



4 Descending C Major "Remington" Exercise (Middle C - Low C)



Warm Up of the Month - Jan 2021
Intermediate/Advanced**5** Ascending C Major "Remington" Exercise (Low C - Middle C)

Musical notation for Exercise 5, showing three staves of music. The first staff contains the first three measures, the second staff the next three, and the third staff the final three. The notes are: C4, D4, E4, F4, G4, A4, B4, C5. The exercise is divided into three groups of three notes each, with a slur under each group. The first group (C4-D4-E4) has a slur that extends to the end of the first measure. The second group (F4-G4-A4) has a slur that extends to the end of the second measure. The third group (B4-C5) has a slur that extends to the end of the third measure. Each measure contains a whole note followed by a whole rest.

6 Ascending C Major Scale (Middle C - High C)

Musical notation for Exercise 6, showing two staves of music. The first staff contains the first six measures, and the second staff the next six. The notes are: C4, D4, E4, F4, G4, A4, B4, C5. The exercise is divided into two groups of six notes each, with a slur under each group. The first group (C4-D4-E4-F4-G4-A4) has a slur that extends to the end of the first measure. The second group (B4-C5) has a slur that extends to the end of the second measure. Each measure contains a whole note followed by a whole rest.

7 Ascending C Major "Remington" Exercise (Middle C - High C)

Musical notation for Exercise 7, showing three staves of music. The first staff contains the first three measures, the second staff the next three, and the third staff the final three. The notes are: C4, D4, E4, F4, G4, A4, B4, C5. The exercise is divided into three groups of three notes each, with a slur under each group. The first group (C4-D4-E4) has a slur that extends to the end of the first measure. The second group (F4-G4-A4) has a slur that extends to the end of the second measure. The third group (B4-C5) has a slur that extends to the end of the third measure. Each measure contains a whole note followed by a whole rest.

8 Descending C Major "Remington" Exercise (High C - Middle C)

9 Ascending C Major Scale (High C - High F)

10 Ascending C Major "Remington" Exercise (High C - High F)

11 C Major Triad - Full Range

12 Long Overtones - Finger Low C throughout, no octave key. If you can't yet play some of the higher overtones, play the highest overtone you can play for the rest of the exercise.

13 C Major Overtone Scale

Exercise 13 consists of two staves of music. The first staff shows a sequence of notes: C4 (quarter), G4 (quarter), C5 (quarter), G5 (quarter), C6 (quarter), G6 (quarter), C7 (quarter), and G7 (quarter). The second staff shows a sequence of notes: C4 (quarter), E4 (quarter), G4 (quarter), Bb4 (quarter), C5 (quarter), E5 (quarter), G5 (quarter), and Bb5 (quarter). Below each staff are fretboard diagrams for the guitar. The first staff's diagrams show the positions for C4, G4, C5, and G5. The second staff's diagrams show the positions for C4, E4, G4, Bb4, C5, E5, G5, and Bb5. The diagrams use black dots for fretted notes and white circles for open strings. Fingering is indicated by numbers 1-4.

14 C Major Overtone Scale

Exercise 14 consists of a single staff of music showing a sequence of notes: C4 (quarter), E4 (quarter), G4 (quarter), Bb4 (quarter), C5 (quarter), E5 (quarter), G5 (quarter), and Bb5 (quarter). Below the staff are fretboard diagrams for the guitar. The diagrams show the positions for C4, E4, G4, Bb4, C5, E5, G5, and Bb5. The diagrams use black dots for fretted notes and white circles for open strings. Fingering is indicated by numbers 1-4.